



SWISSMAR®
SINCE 1983

2022 / 2023 Collection

www.swissmar.com



SWISSMAR®
SINCE 1983

Shucker Paddy



03	Swissmar Fondue
13	Swissmar Fondue Accessories
15	Swissmar Raclette Party Grills
21	Swissmar Raclette Accessories
24	Swissmar Cheese Knives and Accessories
30	Swissmar Slate Boards
31	Swissmar Spice Mills
44	Swissmar Spice Accessories
45	Swissmar Swiss Made Kitchen Tools
48	Swissmar Kitchen Tools
49	Shucker Paddy Oyster Gear
51	Börner V-Slicers and Accessories
55	Swissmar Wine and Bar Accessories
60	CDU Merchandisers

Swissmar Raclette Party Grills

KF-78020 Geneva with reversible cast-aluminum nonstick grill/griddle top
page 18



New

KF-74020 4-Person Geneva
page 18

New



Fondue

FE1019R Arolla Red
page 10

New



Swissmar Cheese Knives and Accessories

CS0190 4 Pc Slate Board Set
page 30

New





SWISSMAR FONDUE

Fondue

Made for entertaining, this retro 70's throwback is the ultimate entertaining tool. Swissmar is the leader for this Swiss tradition, offering the widest assortment of Fondues on the market. Whether you choose Cheese, Oil/Broth or Chocolate Fondue, guests will rave about the experience.

This simple traditional meal allows guests to prepare their own feast and enjoy conversation and fun at the same time. While cheese fondue is the most widely known, meat and chocolate fondue are just as traditional, making a fun evening with friends and family unique and memorable.

Our Swissmar Fondue collection allows for a diverse and exceptional culinary experience to enjoy and share with company.

Fun Fact:

Sometime after World War II, Swiss cooks began cooking meat in hot oil as an alternative to their beloved cheese fondue — a kind of French-fried meat supper. It became known as fondue Bourguignonne because the French-speaking Swiss are descended from the Burgundians.

TIP: The cooking oil should be heated in the metal fondue pot on top of the kitchen stove. The optimum temperature for frying the meat is 375°F, although it can be cooked properly down to 360°F. A deep-frying thermometer is an essential tool for telling when the oil has reached the frying temperature.



Metallic Fondue

Swissmar offers metallic fondue sets in cast aluminum, stainless steel and copper plated stainless steel which are ideal for an oil/broth fondue. Suited to cooking at high temperatures, the oil/broth is often pre-heated directly in the fondue pot on the stovetop and then carefully transferred to the rechaud base. With an oil/broth fondue it is important to use the splatter guard to prevent hot oil splatters.

Peak 10 Pc Copper Fondue Set

Gift boxed.

1.25L / 1.32 QT. capacity

21 x 21 x 19.5 cm / 8.27 x 8.27 x 7.68 in

Pack of 2

SRP \$90.00 ea E-4500
F66920



Realp 11 Pc Cast Aluminum Fondue Set

Gift boxed.

1.5 L / 1.58 QT. capacity

24.5 x 21 x 17 cm / 9.6 x 8.25 x 6.7 in

Pack of 4

SRP \$90.00 ea E-4500
F66430



Bienne 11 Pc Stainless Steel Fondue Set

Gift boxed.

2.0 L / 2.1 QT. capacity

20.3 x 20.3 x 21.3 cm /

8 x 8 x 8.4 in

Pack of 4

SRP \$80.00 ea E-4000
F66917



Biel 11 Pc Copper Fondue Set

Gift boxed.

2.0 L / 2.1 QT. capacity

20.3 x 20.3 x 21.3 cm /

8 x 8 x 8.4 in

Pack of 4

SRP \$100.00 ea E-5000
F66915





Cast Iron Fondue

Swissmar Cast Iron Fondues offer the utmost in versatility. In addition to their décor savvy color pallet, they are ideal for oil/broth, cheese AND chocolate fondue. Cast iron pots provide even heat distribution, making them ideal for cooking at both high and low temperatures – without hot spots.

And don't forget, your cast iron pot can also be used on other heat sources, like in the oven for example.

Sierra 12 Pc Cast Iron Fondue Set Orange

Gift boxed.
1.6 L / 1.6 QT. capacity
17 x 17 x 21 cm / 6.75 x 6.75 x 8.25 in
Pack of 4
SRP \$100.00 ea E-5000
F66695



Sierra 12 Pc Cast Iron Fondue Set Cherry

Gift boxed.
1.6 L / 1.6 QT. capacity
17 x 17 x 21 cm /
6.75 x 6.75 x 8.25 in
Pack of 4
SRP \$100.00 ea E-5000
F66705



Sierra 12 Pc Cast Iron Fondue Set Deep Blue

Gift boxed.
1.6 L / 1.6 QT. capacity
17 x 17 x 21 cm /
6.75 x 6.75 x 8.25 in
Pack of 4
SRP \$100.00 ea E-5000
F66706



Sierra 12 Pc Cast Iron Fondue Set Matte White

Gift boxed.
1.6 L / 1.6 QT. capacity
17 x 17 x 21 cm /
6.75 x 6.75 x 8.25 in
Pack of 4
SRP \$100.00 ea E-5000
F66707



Sierra 12 Pc Cast Iron Fondue Set Metallic Black

Gift boxed.
1.6 L / 1.6 QT. capacity
17 x 17 x 21 cm /
6.75 x 6.75 x 8.25 in
Pack of 4
SRP \$100.00 ea E-5000
F66708



Sierra fondue sets include: pot, 6 forks, spatter ring, rechaud, fondue burner and recipe cards. See page 13/14 for accessories.



Lucerne 10 Pc Cast Iron Fondue Set Red

Gift boxed.
2 L / 2 QT. capacity
21 x 21 x 21 cm /
8.1 x 8.1 x 8.1 in
Pack of 1

**SRP \$120.00 ea E-6000
F66540**



Lucerne 10 Pc Cast Iron Fondue Set Indigo Blue

Gift boxed.
2 L / 2 QT. capacity
21 x 21 x 21 cm /
8.1 x 8.1 x 8.1 in
Pack of 1
**SRP \$120.00 ea E-6000
F66541**



New

Lucerne 10 Pc Cast Iron Fondue Set Black Matte

Gift boxed.
2 L / 2 QT. capacity
21 x 21 x 21 cm /
8.1 x 8.1 x 8.1 in
Pack of 1

**SRP \$120.00 ea E-6000
F66542**



New

Summit 10 Pc Cast Iron Fondue Set Black Matte

Gift boxed.
1 L / 1.05 QT. capacity
21.75 x 21.75 x 19.5 cm /
8.56 x 8.46 x 7.68 in
Pack of 2

**SRP \$90.00 ea E-4500
F66921**



New





The Lugano cast iron pot is shaped like a Swiss caquelon, making it perfect for cheese fondue. The wide bottom helps to evenly distribute the heat.

Lugano 9 Pc Cast Iron Fondue Set

Cherry

Gift boxed.

2 L / 2 QT. capacity

35.5 x 25.5 x 24 cm /

13.98 x 10.04 x 9.45 in

Pack of 1

SRP \$120.00 ea E-6000

KF-66517



Lugano 9 Pc Cast Iron Fondue Set

Black Matte

Gift boxed.

2 L / 2 QT. capacity

35.5 x 25.5 x 24 cm /

13.98 x 10.04 x 9.45 in

Pack of 1

SRP \$120.00 ea E-6000

KF-66513



Lugano 9 Pc Cast Iron Fondue Set

Deep Blue

Gift boxed.

2 L / 2 QT. capacity

35.5 x 25.5 x 24 cm /

13.98 x 10.04 x 9.45 in

Pack of 1

SRP \$120.00 ea E-6000

KF-66518



Lugano 9 Pc Cast Iron Fondue Set

Metallic Black

Gift boxed.

2 L / 2 QT. capacity

35.5 x 25.5 x 24 cm /

13.98 x 10.04 x 9.45 in

Pack of 1

SRP \$120.00 ea E-6000

KF-66521



Lugano 9 Pc Cast Iron Fondue Set

Matte White

Gift boxed.

2 L / 2 QT. capacity

35.5 x 25.5 x 24 cm /

13.98 x 10.04 x 9.45 in

Pack of 1

SRP \$120.00 ea E-6000

KF-66522



Replacement Pot

31 x 22 x 7 cm / 12.25 x 8.25 x 2.8 in

Pack of 4

SRP \$65.00 ea E-3250



F65014 – Matte white



F65013 – Metallic black



F65004 – Red

F65015 – Red Small 1.3 L / 1.4 QT capacity

SRP \$45.00 E-2250



F65005 – Blue



F65003 – Matte black



Lugano fondue sets include: pot, 6 forks, rechaud, fondue burner and recipe card. See page 13/14 for accessories.



Ceramic Fondue

Swissmar Ceramic Fondues are best suited for cheese fondue. Combine the smooth heat conductivity of the ceramic, with the Swiss caquelon shape, and you are sure to have an amazing cheese fondue experience. Control the flame and a traditional fondue of Emmenthal and Gruyere cheeses, or any cheese, is less likely to burn in a ceramic pot.

Fun Fact:

Amusing Fondue traditions are abundant. One such tradition, if a lady lost her bread in the cheese while swirling it, she had to kiss every gentleman present.

Heidi 9 Pc Ceramic Fondue Set

Gift boxed.

2.65 L / 2.8 QT. capacity
38 x 27 x 23 cm / 15 x 11 x 9 in

Pack of 1

**SRP \$120.00 ea E-6000
F66885**

Replacement Pot

38 x 22.9 x 9.2 cm /
15 x 9 x 3.6 in

Pack of 1

**SRP \$70.00 ea E-3500
F65085**



Gruyère 9 Pc Ceramic Fondue Set

Gift boxed.

2.65 L / 2.8 QT. capacity
38 x 27 x 23 cm / 15 x 11 x 9 in

Pack of 1

**SRP \$120.00 ea E-6000
F66901**

Replacement Pot

38 x 22.9 x 9.2 cm /
15 x 9 x 3.6 in

Pack of 1

**SRP \$70.00 ea E-3500
F65028**



3 IN 1 FONDUE!

These multi-purpose fondues have a ceramic insert that acts as a double boiler, so you can use one fondue for 3 different types of fondue - MEAT, CHEESE AND CHOCOLATE. Meat Fondue - Simply remove the white ceramic bowl, put the spatter guard in place and you're ready for a meat fondue! Cheese and Chocolate Fondue - For cheese and chocolate fondue add water in the fondue pot, put the white ceramic bowl in place and you are ready to go!

Züri 11 Pc Stainless Steel Fondue Set

Gift boxed.

Stainless Steel Pot
2.21 L / 2.25 QT. capacity

Ceramic Insert

1.05 L / 1.1 QT. capacity

25.4 dia. x 21 cm /

10 dia. x 8.25 in

Pack of 4

**SRP \$120.00 ea E-6000
F66919**



All 3 in 1 fondue sets include stainless steel/copper pot, ceramic insert, 6 forks, rechaud, spatter ring, fondue burner and recipe cards. See page 13/14 for accessories.

Arosa 11 Pc Stainless Steel Fondue Set

Gift boxed.

Stainless Steel Pot 1.5 L / 1.6 QT. capacity

Ceramic Insert 1.0 L / 1.0 QT. capacity

22 x 22 x 24 cm /

8.5 x 8.5 x 9.25 in

Pack of 6

SRP \$120.00 ea E-6000

F66417



Lausanne 11 Pc Copper Fondue Set

Gift boxed.

Copper Pot 1.8 L / 1.9 QT. capacity

Ceramic Insert 1.25 L / 1.3 QT. capacity

22 x 22 x 24 cm / 8.5 x 8.5 x 9.25 in

Pack of 6

SRP \$140.00 ea E-7000

F66415



Ceramic Insert

1.0 L / 1.0 QT. capacity

Pack of 1

SRP \$25.00 ea E-1250

F65107



Ceramic Insert

1.0 L / 1.0 QT. capacity

Pack of 1

SRP \$25.00 ea E-1250

F65105



Electric Fondue

Gaining in popularity, many people are now looking to make their fondue experience electric...literally. With a fully adjustable temperature control, electric fondue suits all fondue types, oil/broth, cheese and chocolate, making it wonderfully versatile. Swissmar electric fondues are also equipped with a magnetic safety plug.

Mont Brulé 9 Pc Electric Fondue Set

Mont Brulé delivers, design, function, aesthetics and appeal.

Take entertaining with family and friends to a new level.

- Mirror-finished stainless steel bowl with brushed stainless steel handles
- Variable heat control with power-on indicator light
- Stainless steel spatter guard
- 6 stainless steel fondue forks
- Safe magnetic power cord
- 1000W / 120V / 60 Hz

Gift boxed.

1.9 L / 2 QT. capacity

29.5 x 29.5 x 22 cm / 11.6 x 11.6 x 8.6 in

Pack of 4

SRP \$110.00 ea E-6600

FE1005



Arolla 10 Pc Stainless Steel Electric Fondue Set

Gift boxed.

2 L / 2.1 QT. capacity

28.45 x 28.45 x 20.5 cm / 11.2 x 11.2 x 8.1 in

Pack of 4

SRP \$100.00 ea E-6000
FE1019

New



Arolla 10 Pc Red Electric Fondue Set

Gift boxed.

2 L / 2.1 QT. capacity

28.45 x 28.45 x 20.5 cm /

11.2 x 11.2 x 8.1 in

Pack of 4

SRP \$110.00 ea E-6600
FE1019R

New



Fondue for All Seasons

The cocooning/stay at home effect has brought on a resurgence in popularity of Fondue and Raclette. As home cooks look for new and creative mealtime ideas, Fondue and Raclette have moved from being strong Q4 and holiday traditions, brought out for special occasions, to an everyday mainstay. We are now witnessing increased year round sales with many consumers adopting it for everyday mealtime use throughout the year, both indoors and outdoors.



Chocolate Fondue

Chocolate fondue was created by a Swiss Chef living in New York in the 1960s, and is the perfect way to stir up a dinner party. It is practically effortless to prepare and your guests can participate and enjoy a fun and delicious chocolate dessert at a relaxed pace.

Tips for Chocolate Fondue

Chocolate should be melted in the top of a double boiler, over gently simmering water, never over direct heat. You can also microwave it, uncovered, on medium, stirring frequently. If you are using cream, ensure that it is warm when adding it to the chocolate. If the chocolate clumps together, try stirring in unsalted butter or vegetable oil one teaspoon at a time, until the chocolate becomes smooth again.



Rubik 12 Pc Chocolate Fondue Set

White

Gift boxed.

300 ml / 10 oz Capacity

30 x 30 x 13.8 cm / 11.8 x 11.8 x 5.43 in

Pack of 6

SRP \$55.00 ea E-2750

F66329



Indulge 4 Pc Chocolate Fondue Mug Set

Black

Gift boxed.

125 ml / 4.2 oz Capacity

10.15 x 13.5 x 12.16 cm / 4 x 5.3 x 4.8 in

Pack of 6

SRP \$15.00 ea E-750

F66328



Indulge 4 Pc Chocolate Fondue Mug Set

White

Gift boxed.

125 ml / 4.2 oz Capacity

10.15 x 13.5 x 12.16 cm / 4 x 5.3 x 4.8 in

Pack of 6

SRP \$15.00 ea E-750

F66327



Sweetheart 4 Pc Chocolate Fondue Mug Set

Gift boxed.

120 ml / 4 oz. capacity

14 x 9.9 x 12.5 cm / 5.5 x 3.9 x 4.9 in

Pack of 6

SRP \$15.00 ea E-750

F12066



Nostalgia 4 Pc Chocolate Fondue Mug Set

Gift boxed.

120 ml / 4 oz. capacity

14 x 9.9 x 12.5 cm / 5.5 x 3.9 x 4.9 in

Pack of 6

SRP \$15.00 ea E-750

F12064



Decadence 7 Pc Chocolate Fondue Set

Gift boxed.

200mL / 6.8 oz. capacity

11 x 11 x 13.5 cm / 4.3 x 4.3 x 5.3 in

Pack of 12

SRP \$15.00 ea E-750

F66325



Chocolate Fondue Shopping List:

- Fresh Fruit
 - Strawberries
 - Apples
 - Grapes
 - Melon
- Ladyfingers
- Marshmallows
- Pound Cake
- Pretzels



Kindle 7 Pc Chocolate Fondue Set

Gift boxed.

250 ml / 8.5 oz. capacity

12 x 12 x 18 cm / 5 x 5 x 7 in

Pack of 18

SRP \$15.00 ea E-750

F66321



Glow 7 Pc Chocolate Fondue Set

Gift boxed.

280 ml / 9.5 oz. capacity

15 x 13 x 17 cm / 6 x 5 x 7 in

Pack of 18

SRP \$20.00 ea E-1000

F66322



Fondue/Raclette Porcelain Plates – Square

4 pc set

Gift boxed.

25.4 x 25.4 x 2.2 cm / 10 x 10 x 0.875 in

Pack of 4 sets

SRP \$60.00 ea E-3000

F7



Fondue/Raclette Porcelain Plates – Round

4 pc set

Gift boxed.

25.7 dia. x 2.1 cm / 10.125 dia. x 0.8125 in

Pack of 4 sets

SRP \$60.00 ea E-3000



Meat Fondue Forks – 6 Pc Set

Black handles. 2 sharp tines with additional barbs to hold meat in place, heat resistant handle with 18/8 stainless steel shaft, numbered black handles.

Gift boxed.

Length: 27 cm / 10.6 in

Pack of 12 sets

SRP \$18.00 ea E-900

F79204



Meat Fondue Forks – 6 Pc Set

Faux wood color handles. 2 sharp tines with additional barbs to hold meat in place, heat resistant handle with 18/8 stainless steel shaft.

Gift boxed.

Length: 27 cm / 10.6 in

Pack of 12 sets

SRP \$18.00 ea E-900

F79202



Cheese Fondue Forks – 6 Pc Set

Black handles. 3 tines with slight curve to hold bread, perfect for swooping through cheese fondue, heat resistant handle with 18/8 stainless steel shaft, numbered black handles.

Gift boxed.

Length: 27 cm / 10.6 in

Pack of 12 sets

SRP \$18.00 ea E-900

F79203



Cheese Fondue Forks – 6 Pc Set

Faux wood color handles. 3 tines with slight curve to hold bread, perfect for swooping through cheese fondue, heat resistant handle with 18/8 stainless steel shaft.

Gift boxed.

Length: 27 cm / 10.6 in

Pack of 12 sets

SRP \$18.00 ea E-900

F79201



Fondue Burner

Gift boxed.
Pack of 40
Fuel sold separately.
SRP \$15.00 ea E-750
KF-63011



Wrought Iron Rechaud

Gift boxed.
Pack of 12
Wrought iron rechaud only with fondue burner.
SRP \$40.00 ea E-2000
KF-60645



Swiss Fire Gel

Gift boxed.
3 x 80 g / 3 x 3 oz. cans per sleeve
Pack of 10 sleeves
SRP \$8.00 ea E-400
F65200



Replacement Pot

31 x 22 x 7 cm / 12.25 x 8.25 x 2.8 in
Pack of 4
SRP \$65.00 ea E-3250

-  **F65014 – Matte white**
-  **F65013 – Metallic black**
-  **F65004 – Red**
-  **F65015 – Red Small 1.3 L / 1.4 QT capacity**
SRP \$45.00 E-2250
-  **F65005 – Blue**
-  **F65003 – Matte black**



Swiss Fire Gel

Pack of 12
1 L / 34 oz.
SRP \$10.00 ea E-500
F65400



Swiss Fire Gel

Pack of 12
500 ml / 17 oz.
SRP \$8.00 ea E-400
F65300



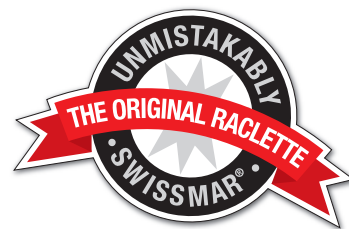
Please note: For Swiss Fire Gel special regulatory shipping requirements may result in additional surcharges. For more information please contact Swissmar customer service.

Fondue Recipe Book

Display box
Prepack of 12
SRP \$10.00 ea E-500
FDUBOOK – English
FDUBOOK-FR – French



Don't just host the party...Join It!



SWISSMAR RACLETTE PARTY GRILLS

Do you Raclette?

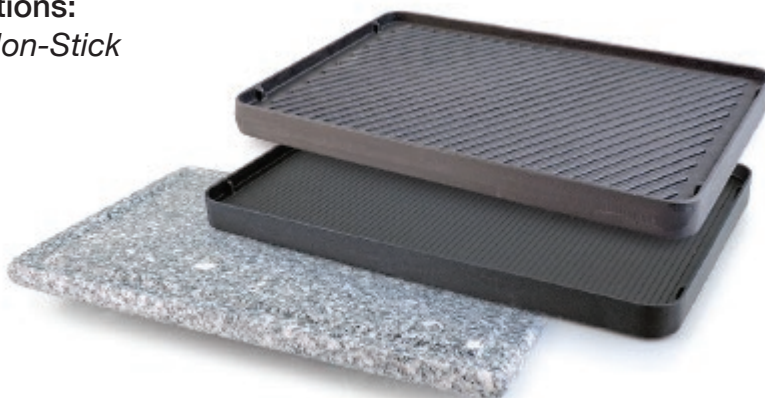
Entertaining family and friends is a time honored tradition and adding a Raclette into the mix will certainly kick it up a notch!

Imagine hosting a party where you are not sequestered to the kitchen putting the final touches on each dish. Instead, imagine sitting among your guests while everyone socializes as they cook their own meal. That is Raclette!

We proudly offer the largest assortment of Raclettes to suit every Raclette cooking style. From our standard non-stick cast aluminum or cast iron reversible grill/crêpe tops, to the granite stone top for the ultimate grilling experience, it is all about versatility.



Raclette Grill Options:
Cast Aluminum Non-Stick
Cast Iron
Granite Stone
Get Cooking!



Cast Iron Grill Plate

Originating with Swissmar Raclettes, the cast iron grill plate is not only reversible with a grill side and a separate crêpe side, it also doubles for use in the oven or on the BBQ.

8 Person Red Classic Raclette Party Grill with Reversible Cast Iron Grill Plate

Features:

- 8 heat-resistant spatulas
- 8 raclette dishes – non-stick coating
- Reversible cast iron grill/crêpe top – enamelled matte finish
- Variable heat control
- 1200 watts / 120V / 60 Hz

Gift boxed. Red

40 x 24 x 13 cm / 15.7 x 9.5 x 6 in

Pack of 1

SRP \$160.00 ea E-9600

KF-77046



8 Person Classic Raclette Party Grill with Reversible Cast Iron Grill Plate

Features:

- 8 heat-resistant spatulas
- 8 raclette dishes – non-stick coating
- Reversible cast iron grill/crêpe top – enamelled matte finish
- Variable heat control
- 1200 watts / 120V / 60 Hz

Gift boxed. Anthracite

40 x 24 x 13 cm / 15.7 x 9.5 x 6 in

Pack of 1

SRP \$160.00 ea E-9600

KF-77040

Also great
for crêpes



*All raclette models include instruction manual.

Granite Stone

Cooking with the hot stone is an aesthetically beautiful experience. Once pre-heated, enjoy the even heat distribution this natural cooking surface has to offer.

8 Person Stelvio Raclette Party Grill with Granite Stone Grill Top

Features:

- 8 heat-resistant spatulas
- 8 raclette dishes – non-stick coating
- Variable heat control
- Granite stone grill top
- 1200 watts / 120V / 60 Hz

Gift boxed. Brushed stainless steel
40 x 24 x 13 cm / 15.7 x 9.5 x 6 in
Pack of 1

SRP \$165.00 ea E-9900
KF-77081



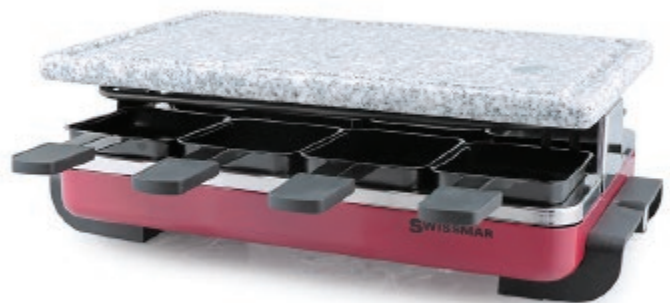
8 Person Red Classic Raclette Party Grill with Granite Stone Grill Top

Features:

- 8 heat-resistant spatulas
- 8 raclette dishes – non-stick coating
- Variable heat control
- Granite stone grill top
- 1200 watts / 120V / 60 Hz

Gift boxed. Red
40 x 24 x 13 cm / 15.7 x 9.5 x 6 in
Pack of 1

SRP \$155.00 ea E-9300
KF-77045



8 Person Matterhorn Raclette Party Grill with Granite Stone Grill Top

Features:

- Unique oval design for added versatility
- 8 heat-resistant spatulas
- 8 raclette dishes – non-stick coating
- Granite stone grill top
- Variable heat control
- 1450 watts / 120V / 60 Hz

Gift boxed. Black
47 x 32 x 15.3 cm / 18.5 x 12.5 x 6.0 in
Pack of 2

SRP \$140.00 ea E-8400
KF-77067

8 Person Matterhorn Raclette Party Grill with Wood Base and Granite Stone Grill Top

Features:

- Unique oval design with unique water transfer wood base
- 8 heat-resistant spatulas
- 8 raclette dishes – non-stick coating
- Granite stone grill top
- Variable heat control
- 1450 watts / 120V / 60 Hz

Gift boxed. Faux Wood
47 x 32 x 15.3 cm / 18.5 x 12.5 x 6.0 in
Pack of 1

SRP \$145.00 ea E-8700
KF-77069

Cast Aluminium Non-Stick Grill Plate

Like the cast iron version, this grill plate is reversible with a grill side and a separate crêpe side. The non-stick coating is perfect for grilling meat fish and vegetables, but crêpes and pancakes also flip with ease.

8 Person Classic Raclette Party Grill with Reversible Cast Aluminum Non-Stick Grill Plate

Features:

- 8 heat-resistant spatulas
- 8 raclette dishes – non-stick coating
- Reversible cast aluminum non-stick grill/crêpe plate
- Variable heat control
- 1200 watts / 120V / 60 Hz

Gift boxed. Anthracite
40 x 24 x 13 cm / 15.7 x 9.5 x 6 in

Pack of 1

SRP \$145.00 ea E-8700

KF-77041



8 Person Geneva Raclette Party Grill with Reversible Cast Aluminum Non-Stick Grill Plate

Features:

- 8 heat-resistant spatulas
- 8 non-stick raclette dishes with thumb guard
- Reversible cast-aluminum non-stick grill/griddle top
- Variable heat control
- Power indicator light
- 1400 W / 120 V / 60 Hz

Gift boxed.
50.8 x 22.86 x 13.33 cm / 20 x 9 x 5.25 in

Pack of 3

SRP \$78.00 ea E-7800

KF-78020

New



4 Person Geneva Raclette Party Grill with Reversible Cast Aluminum Non-Stick Grill Plate

Features:

- 4 heat-resistant spatulas
- 4 non-stick raclette dishes with thumb guard
- Reversible cast aluminum non-stick grill plate
- Variable heat control
- Power indicator light

Gift boxed.

SRP \$80.00 ea E-4800

KF-74020

New



8 Person Classic Raclette Party Grill with Reversible Cast Aluminum Non-Stick Grill Plate

Features:

- 8 heat-resistant spatulas
- 8 raclette dishes – non-stick coating
- Reversible cast aluminum non-stick grill/crêpe plate
- Variable heat control
- 1200 watts / 120V / 60 Hz

Gift boxed. Brushed stainless steel
40 x 24 x 13 cm / 15.7 x 9.5 x 6 in

Pack of 1

SRP \$155.00 ea E-9300

KF-77080



8 Person Classic Raclette Party Grill with Reversible Cast Aluminum Non-Stick Grill Plate

Features:

- 8 heat-resistant spatulas
- 8 raclette dishes – non-stick coating
- Reversible cast aluminum non-stick grill/crêpe plate
- Variable heat control
- 1200 watts / 120V / 60 Hz

Gift boxed. Red

40 x 24 x 13 cm / 15.7 x 9.5 x 6 in

Pack of 1

SRP \$145.00 ea E-8700

KF-77043



8 Person Matterhorn Raclette Party Grill with Reversible Cast Aluminum Non-Stick Grill Plate

Features:

- Unique oval design for added versatility
- 8 heat-resistant spatulas
- 8 raclette dishes – non-stick coating
- Reversible cast aluminum non-stick grill plate
- Variable heat control
- 1450 watts / 120V / 60 Hz

Gift boxed. Black

47 x 32 x 15.3 cm / 18.5 x 12.5 x 6.0 in

Pack of 1

SRP \$135.00 ea E-8100

KF-77066



8 Person Matterhorn Raclette Party Grill with Wood Base and Reversible Cast Aluminum Non-Stick Grill Plate

Features:

- Unique oval design with unique water transfer wood base
- 8 heat-resistant spatulas
- 8 raclette dishes – non-stick coating
- Reversible cast aluminum non-stick grill plate
- Variable heat control
- 1450 watts / 120V / 60 Hz

Gift boxed. Faux Wood

47 x 32 x 15.3 cm / 18.5 x 12.5 x 6.0 in

Pack of 1

SRP \$140.00 ea E-8400

KF-77068



8 Person Swivel Raclette Party Grill

Features:

- Hot Stone and Cast Aluminum non-stick grill plates
- Black base with stainless steel tray
- Versatile usage; unfolds up to 180 degrees
- Separate power controls for each grill side
- Includes 8 non-stick raclette dishes, 8 heat-resistant spatulas and user manual with recipes
- 1200 W / 120V / 60 Hz

Gift boxed.

Closed: 56 x 24 x 13 cm / 22.13 x 9.5 x 5.13 in

Open: 100 x 17 x 13 cm / 39.5 x 6.5 x 5.13 in

Pack of 2

SRP \$170.00 ea E-10200

KF-77073



Candlelight Raclettes

These innovative Candlelight Raclettes take the Swiss fun of Raclette to a new level. The compact design makes it easy to enjoy Raclette on the patio, picnic, camping or on any adventure. Powered by tealight candles, you can melt delicious cheese and enjoy over boiled potatoes and bread (the truly Swiss experience), or get more creative and add bubbly, melted cheese to crackers or a sandwich.

Alpine Portable Candlelight Raclette

Features:

- 2 heat-resistant spatulas
- 2 raclette dishes – non-stick coating
- Stainless steel stand/case
- Plastic lid/serving plate
- 4 tealight candles

Gift boxed.

22 x 10 x 6 cm / 8.5 x 4 x 2.25 in

Pack of 6 sets

SRP \$40.00 ea E-2000

KF-00436



Nordic Foldable Candlelight Raclette

Features:

- 1 heat-resistant spatula
- 1 raclette dish – non-stick coating
- Foldable black steel stand
- 3 tealight candles

Gift boxed.

18 x 8 x 6 cm /

7.25 x 3.5 x 2.25 in

Pack of 12 sets

SRP \$20.00 ea E-1000

KF-00536



*Take the fun of Raclette outdoors...
with a Candlelight Raclette*





A Swiss Tradition... and so much more.

Originating in Switzerland, raclette (the dish), is one of Switzerland's best-loved national fares. Its origin dates back hundreds of years, to when shepherds (Swiss cowboys) would move their herds high into the mountains for grazing in the warm summer months. Supplies would be limited to what could be carried and consisted of basics, such as potatoes, flour, perhaps some pickled gherkins, a round of cheese produced from the milk of their beloved cows, and of course, a good Swiss wine. Long, lonely evenings were passed in front of a campfire, and a simple and primitive tradition was born: A wheel of cheese was cut in half and placed on a rock near the fire's edge. The cheese slowly bubbled and just before dripping into the fire, the wheel was lifted from its perch and scraped onto a waiting plate of potatoes and pickles - the word "Raclette" comes from the French word "racler" meaning "to scrape off". From these humble origins, the Raclette tradition was born.



Raclette/Fondue Porcelain Plates – Square

Set of 4

Gift boxed.

25.4 x 25.4 x 2.2 cm / 10 x 10 x 0.875 in

Pack of 4 sets

SRP \$60.00 ea E-3000

F77103



Raclette/Fondue Porcelain Plates – Round

Set of 4

Gift boxed.

25.7 dia. x 2.1cm / 10.125 dia. x 0.8125 in

Pack of 4 sets

SRP \$60.00 ea E-3000

F77105



Cast Iron Reversible Grill Plate

For Classic and Stelvio models

Enamelled matte finish.

36 x 24 x 2.5 cm / 14.5 x 9.5 x 1 in

Pack of 1

SRP \$80.00 ea E-4000

KF-77047



Cast Aluminum Reversible Non-Stick Grill Plate

For Classic and Stelvio models

Non-stick cast aluminum.

36 x 24 x 2 cm / 14.6 x 9.5 x 0.75 in

Pack of 1

SRP \$60.00 ea E-3000

KF-77048



Raclette Granite Stone Grill Top

For Classic and Stelvio models

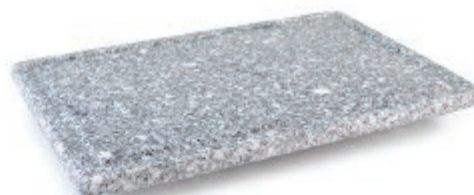
Granite stone.

36 x 24 x 2 cm / 14.6 x 9.5 x 0.75 in

Pack of 1

SRP \$65.00 ea E-3250

KF-77049



Oval Cast Aluminum Reversible Non-Stick Grill Plate

For Matterhorn model

Non-stick cast aluminum.

40 x 32 x 1.8 cm / 15.7 x 12.5 x 0.7 in

Pack of 1

SRP \$60.00 ea E-3000

KF-77066G



Oval Raclette Granite Stone Grill Top

For Matterhorn model

Granite stone.

40 x 32 x 1.8 cm / 15.7 x 12.5 x 0.7 in

Pack of 1

SRP \$65.00 ea E-3250

KF-77066S



Swivel Raclette Reversible Grill/Griddle Top Plate

For Swivel model

Non-stick cast aluminum.

33 x 12.5 x 2 cm / 13 x 4.88 x 0.63 in

Pack of 1

SRP \$30.00 ea E-1500

KF-77073G



Swivel Raclette Granite Stone Grill Plate

For Swivel model

Granite Stone.

33 x 12 x 2 cm / 13 x 4.75 x 0.63 in

Pack of 1

SRP \$35.00 ea E-1750

KF-77073S



Raclette Dishes

For Classic and Stelvio models

Gift boxed. Set of 2

Non-stick.

19 x 8 x 4 cm / 7.5 x 3.25 x 1.5 in

Pack of 2 sets

SRP \$18.00 ea E-900

KF-77008



Raclette Dishes

For Matterhorn model

Bulk. Set of 2

Non-stick.

23.5 x 9 x 1.3 cm / 9.25 x 3.5 x 0.5 in

Pack of 2 sets

SRP \$15.00 ea E-750

KF-77066D



Dish Holder

Gift boxed. Set of 4
Stainless dish holders.
Suitable for all models.
10 x 6 cm / 4 x 2.5 in
Pack of 4 sets
SRP \$30.00 ea E-1500
KF-77020



Raclette Spatulas

Gift boxed. Set of 4
Heat resistant spatulas.
Suitable for all models.
13 x 5 x 3 cm / 5 x 2 x 1 in
Pack of 4 sets
SRP \$17.00 ea E-850
KF-77019



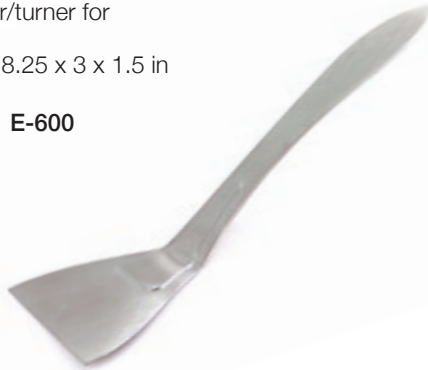
Raclette Tongs

Gift boxed. Set of 4
13 x 5 x 3 cm / 5 x 2 x 1 in
Pack of 4 sets
SRP \$18.00 ea E-900
KF-77022



Granite Stone Scraper/Turner

Carded.
Raclette scraper/turner for
stone top only.
21 x 8 x 4 cm / 8.25 x 3 x 1.5 in
Pack of 12
SRP \$12.00 ea E-600
KF-79800



*updated design

Wooden Crêpe Spreader

Made from European Beech Wood
Pack of 1
SRP \$6.00 ea E-300
KF-77023



Adjustable Wire Cheese Slicer

Carded.
16 x 12 x 0.5 cm / 6.5 x 5 x 0.2 in
Pack of 12
SRP \$20.00 ea E-1000
S3010



Replacement Wire

For S3010
SRP \$2.00 ea E-100
S3010W



Raclette Recipe Book

Prepack display box of 12
SRP \$10.00 ea E-500
RACBOOK1 – English
RACBOOK1-FR – French



Say Cheese

Entertaining with cheese! Imagine an assortment of ripe and delicious cheeses presented on a beautiful slate board, paired with cheese knives specifically designed for cutting and serving cheese...that's true Swissmar style.

Don't just think Cheese, think Charcuterie!

Whether you're enjoying an afternoon / evening on the patio, or are gathered around the table inside, a well-appointed charcuterie platter will dazzle guests. In addition to a selection of wood and slate serving/cutting boards, Swissmar has the perfect knife for cutting and serving every type of cheese. Don't forget we also have the Swissmar Girouette for making those amazing (and delicious) cheese curls.



Chef's Tip – Serving Cheese

When putting together a cheese board, to be served before or after dinner, remember to limit your selection to no more than five different cheeses. Serve cheeses of different sizes, shapes, and flavor or texture profiles to create diversity and add interest to your cheese board. Strong, pungent cheeses shouldn't be placed next to delicately flavored cheeses, and try to have individual knives for each cheese.

Stainless Steel Cheese Knife Prepack with Double-sided Display

Top selling stainless steel cheese knives in one compact display

Contains:

- 6 Cheese Plane - SK8037SS
- 6 Cheese Cleaver - SK8036SS
- 6 Cheese Spreader - SK8035SS
- 6 Hard Rind Cheese Knife - SK8039SS
- 6 Soft Cheese Knife - SK8034SS
- 6 Universal Cheese Knife - SK8018SS

45.3 x 33 x 30 cm /
17.8 x 13 x 11.8 in

Pack of 1

SRP \$720.00 ea E-36000
SCH-PACK2

Empty Display
SCK-DISP2



Stainless Steel Cheese Knife Prepack with Single-sided Display

Top selling stainless steel cheese knives in one compact display

Contains:

- 6 Cheese Spreader - SK8035SS
- 6 Hard Rind Cheese Knife - SK8039SS
- 6 Universal Cheese Knife - SK8018SS

45.3 x 33 x 15 cm / 17.8 x 13 x 5.9 in
Pack of 1

SRP \$360.00 ea E-18000
SCH-PACK3

Empty Display
SCK-DISP3



Stainless Steel Cheese Knife Prepack with Display

Top selling stainless steel cheese knives in one compact display

Contains:

- 6 Cheese Plane - SK8037SS
- 6 Cheese Cleaver - SK8036SS
- 6 Cheese Spreader - SK8035SS
- 6 Hard Rind Cheese Knife - SK8039SS
- 6 Soft Cheese Knife - SK8034SS
- 6 Universal Cheese Knife - SK8018SS
- 1 Wire Display

27.5 x 40 x 35 cm /
0.75 x 15.75 x 13.75 in

Pack of 1

SRP \$720.00 ea E-36000
SCH-PACK



3 Pc Stainless Steel Cheese Knife Set

1 Soft cheese knife, 1 Cheese plane, 1 Cheese cleaver

Gift boxed.

Pack of 6 sets
SRP \$55.00 ea E-2750
SK8703SS



Stainless Steel Cheese Knives

Our classic Stainless Steel collection pairs a simple, ergonomic handle with a variety of specialty blades suited for specific cheese types. Available individually or in sets, these Cheese Knives will help you entertain with elegance and style.



Universal Cheese Knife

Gift boxed.
21 cm / 8.25 in
Pack of 6
SRP \$20.00 ea E-1000
SK8018SS



Soft Cheese Knife

Gift boxed.
24 cm / 9.5 in
Pack of 6
SRP \$20.00 ea E-1000
SK8034SS



Spreader

Gift boxed.
21.5 cm / 8.5 in
Pack of 6
SRP \$20.00 ea E-1000
SK8035SS



Cheese Cleaver

Gift boxed.
19.5 cm / 7.75 in
Pack of 6
SRP \$20.00 ea E-1000
SK8036SS



Cheese Plane

Gift boxed.
22.5 cm / 8.9 in
Pack of 6
SRP \$20.00 ea E-1000
SK8037SS



Hard Rind Cheese Knife

Gift boxed.
25 cm / 9.9 in
Pack of 6
SRP \$20.00 ea E-1000
SK8039SS



Moist Cheese Knife

Gift boxed.
23.5 cm / 9.25 in
Pack of 6
SRP \$20.00 ea E-1000
SK8040SS



Parmesan Cheese Knife

Gift boxed.
19 cm / 7.5 in
Pack of 6
SRP \$20.00 ea E-1000
SK8044SS



Semi-Soft Cheese Knife

Gift boxed.
24.5 cm / 9.75 in
Pack of 6
SRP \$20.00 ea E-1000
SK8045SS



Slim-Line Cheese Knives

Elegantly slice, serve and enjoy cheeses with these Slim-Line Cheese Knives. Assortment includes the following sleek, durable, and highly polished stainless steel pieces: cheese spreader, cheese cleaver, cheese knife and cheese plane. These knives take specialized cheese cutlery to a whole new level providing the perfect ensemble for elegantly slicing and enjoying your favorite cheeses.

Slim-Line Cheese Knife

High polished stainless steel
Acetate sleeve.

16.5 cm / 6.5 in

Pack of 12

SRP \$8.00 ea E-400

SK11902SS



Slim-Line Cheese Cleaver

High polished stainless steel
Acetate sleeve.

16.5 cm / 6.5 in

Pack of 12

SRP \$8.00 ea E-400

SK11903SS



Slim-Line Cheese Plane

High polished stainless steel
Acetate sleeve.

16.5 cm / 6.5 in

Pack of 12

SRP \$8.00 ea E-400

SK11904SS



Slim-Line Cheese Spreader

High polished stainless steel
Acetate sleeve.

16.5 cm / 6.5 in

Pack of 12

SRP \$8.00 ea E-400

SK11905SS



4 Pc Slim-Line Cheese Knife Set

High polished stainless steel

1 Spreader

1 Cheese cleaver

1 Cheese knife

1 Cheese plane

Gift boxed.

Pack of 8 sets

SRP \$32.00 ea

E-1600

SK11901SS



4 Pc Petite Cheese Knife Set

Ergonomically designed and made of stainless steel. 1 Cheese fork, 1 Parmesan knife, 2 Cheese knives

Gift boxed.

Pack of 6 sets

SRP \$35.00 ea E-1750

SK8214SS



3 Pc Acacia Handle Cheese Knife Set

Beautiful Acacia wood handles adorn these functional stainless steel cheese knives. Set includes: Cleaver, moist and parmesan cheese knives.

Gift boxed

Pack of

SRP \$21

SK8704



Acacia Board and Cheese Knife Set

Entertain in style with this beautiful gift set that consists of acacia board and stainless steel cheese knife.

Gift boxed.

40 x 25.4 x 2 cm / 15.5 x 10 x 0.75 in

Pack of 6 sets

SRP \$65.00 ea E-3250

CS0345



Acacia Paddle Board and Knife Set

Paddle style cutting board with decorative handle. With a set of 2 matching cheese knives.

Gift boxed.

45.3 x 22.6 x 1.8 cm / 17.8 x 8.9 x 0.7 in

Pack of 6 sets

SRP \$40.00 ea E-2000

CS0346



Mini Acacia Board 2 Pc Set

Beautiful acacia wood board combined in a set with a stainless steel moist cheese knife

Gift boxed.

28 x 18.4 x 1.9 cm / 11 x 7.25 x 0.75 in

Pack of 6

SRP \$30.00 ea E-1500

CS0344



3 Pc Mini Cheese Knife Block Set

Ergonomic stainless steel cheese knives.

1 Cheese fork

1 Parmesan knife

1 Hard cheese knife

1 Magnetic knife block

Gift boxed.

Pack of 6 sets

SRP \$40.00 ea E-2000

SBB8703



Bamboo Board with Cheese Slicer Blade

Sleeved.

26.9 x 20.6 x 2.9 cm / 10.6 x 8.1 x 1.1 in

Pack of 8

SRP \$35.00 ea E-1750

SBB833



Bamboo Paddle Board

Sleeved.

41 x 15 x 1.5 cm / 16.2 x 6 x 0.6 in

Pack of 12

SRP \$18.00 ea E-900

SBB383





Stainless Steel Cheese Holder

Gift boxed.
6 x 3.2 dia. cm / 2.25 x 1.25 dia. in
Pack of 12
SRP \$15.00 ea E-750
SK3624SS



Olive Stuffer

Make gourmet stuffed olives by filling them with blue cheese, brie or crab meat.

Gift boxed.
15 cm / 7.75 in
Pack of 12
SRP \$17.00 ea E-850
SK3283SS



Adjustable Wire Cheese Slicer

Carded.
16 x 12 x 0.5 cm /
6.5 x 5 x 0.2 in
Pack of 12
SRP \$20.00 ea E-1000
S3010



Replacement Wire

For S3010
SRP \$2.00 ea E-100
S3010W



Girouette

Cheese and chocolate scraper specifically designed to create beautiful cheese or chocolate flowers to accent charcuterie or dessert trays. Designed for use with a special cheese from Switzerland known as "Tate de Moines" (or Monk's Head), or with molded chocolate (mold included).

Gift boxed.
Girouette cheese and chocolate scraper
Base - 22.2 x 2.2 cm /
8.75 x 0.9 in
Height - 16.8 cm / 6.6 in
Pack of 4
SRP \$65.00 ea E-3250
S3300



Set includes:
Wood base, stainless steel pin,
curling blade with wooden handle,
stainless steel chocolate mold and
plastic dome.

Cheese Picks

Add some personality to your next cheese tray with these decorative, yet practical stainless steel cheese picks. Made of 1.5mm stainless steel, with double fork tines, picks will hold cheese, sliced meats or hors d'oeuvres securely.

Make it easy for guests to identify their favorite cheese with Cheese Picks! Match the shape of the cheese pick with the milk type, use a dry-erase/wipe-off marker to specify the type of cheese and your guests will know which is their favorite Goat's Milk Gouda.



Cheese Picks - Cow

Stickered.
8.5 x 4.7 cm / 3.3 x 1.8 in
Bulk pack of 6
SRP \$4.00 ea E-200
CP117



Cheese Picks - Goat

Stickered.
8.8 x 5.1 cm / 3.5 x 2 in
Bulk pack of 6
SRP \$4.00 ea E-200
CP118



Cheese Picks - Sheep

Stickered.
7.7 x 4.5 cm / 3 x 1.7 in
Bulk pack of 6
SRP \$4.00 ea E-200
CP119



Cheese Pick - CDU

CDU is stocked with 12 pcs Cow,
6 pcs Goat and 6 pcs Sheep.
15.24 x 16.94 x 8.89 cm / 6 x 6.67 x 3.5 in
Pack of 24
SRP \$4.00 ea E-200
CPCDU24



Cheese Picks 3 Pc Set

Set of 3 stainless steel cheese picks - cow, goat and sheep
Hanging Polybag.
12 x 18.4 x 0.5 cm / 4.75 x 7.25 x 0.2 in
Pack of 6 sets
SRP \$13.00 ea E-650
CP120



Now includes
wipe-off marker

Slate

In addition to their natural beauty, slate boards are possibly the best choice for serving.

- ✓ Non-porous which means they do not absorb flavors or smells from the surrounding environment
- ✓ Easy to maintain, since it doesn't absorb fats or bacteria from food or cheese on it's surface
- ✓ To clean: a standard rub and scrub is all that is needed, while a few dabs of food safe mineral oil will help bring out a nice shine and lustre
- ✓ Also make a great trivet in a pinch



4pc Slate Board Set

Set includes:

Rectangular Slate Board (S6-001),
Slim-Line Cheese Knife (SK11902SS),
Slim-Line Cheese Cleaver (SK11903SS),
Slim-Line Cheese Spreader (SK11905SS)
Gift Boxed.

Pack of 6

SRP \$45.00 ea E-2250

CS0190

New



Oval Slate Board

Gift tagged.

39 x 25.4 x 0.6 cm / 15.25 x 10 x 0.25 in

Pack of 3

SRP \$25.00 ea E-1250

S6-003



Rectangular Slate Board

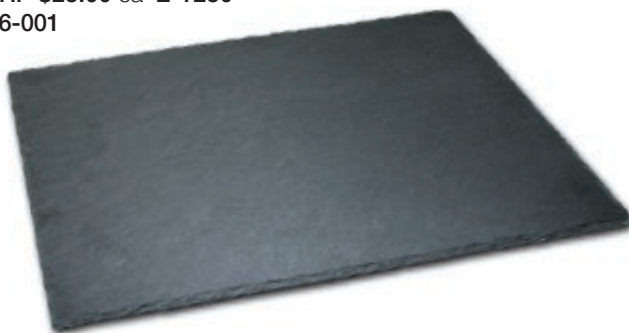
Gift tagged.

40 x 25.4 x 0.6 cm / 15.75 x 10 x 0.25 in

Pack of 3

SRP \$25.00 ea E-1250

S6-001



Swissmar Is Mills...

Through close cooperation with retailers on all levels and ongoing involvement in design and improvement of products, we have gained extensive knowledge of the market and the mill/ spice category as a whole. SWISSMAR is now using all its experience in combination with new materials, processes and innovation to produce high quality mills.

Kitchen Function

Whether a seasoned professional, an aspiring home cook or a beginner with recipe in hand, the right kitchen tools make all the difference to any chef. A fully adjustable Salt or Pepper Mill allows for the right amount of perfectly ground salt and pepper to be added, at that optimal moment. A quality Mill will allow for a range of coarseness, with each setting producing a uniform grind. Choose your tools wisely as you spice up your Mill assortment!

Table Fashion

A well-dressed kitchen/dining table can bring any room to life. Style and elegance can be easily achieved with the right elements. Table dining is enhanced with the right décor and evokes a mood, from casual to formal dining. Beautiful mills with superior function are a necessity.

Just as jewelry completes fashion, so salt & pepper mills complete your tableware and express the host's taste. Swissmar Mills complement various styles, to suit any taste-maker. From casual acrylic, to exotic woods, mixed elements with granite, to elegant traditional German-made styles, we have the mills to go along with any tableware. Whether classic, contemporary or modern farmhouse, Swissmar elevates every style and occasion.

Modular Display Unit for Swissmar Mills

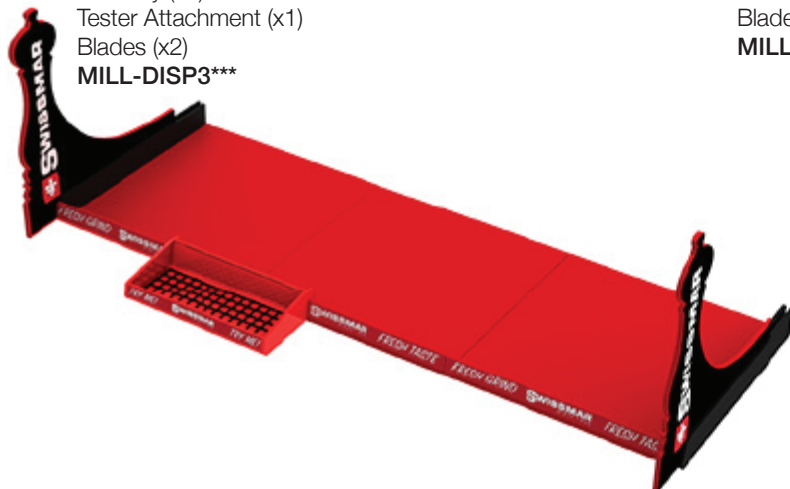
Available in 2 ft and 3 ft configurations complete with product display trays, tester attachment and traffic-stopping graphic blades, this modular display unit provides the perfect home for any assortment of Swissmar Mills. Display can be customized in 1 ft increments to suit any need. Contact your Sales Rep or Swissmar Customer Service for configuration details and ordering.



91.5 cm / 36 in Mill Display Configuration

91.5 x 30.5 cm / 36 x 12 in

Includes:
Right Tray (x1)
Centre Tray (x1)
Left Tray (x1)
Tester Attachment (x1)
Blades (x2)
MILL-DISP3***



61 cm / 24 in Mill Display Configuration

61 x 30.5 cm / 24 x 12 in

Includes:
Right Tray (x1)
Left Tray (x1)
Tester Attachment (x1)
Blades (x2)
MILL-DISP2



Connoisseur Collection

Embrace your inner chef as you season and spice like a pro! Aptly named in honour of their German heritage, the Connoisseur collection of German-Made mills are crafted with the precision and care you would expect of European made mills.

Exclusive to the Munich mills in this collection, mills feature a unique technology called HELICOIL® that prevents the adjustment knob from coming loose, ensuring the grind setting does not change during use.



Pepper Mechanism

Made in Germany, this spice specific mechanism is made from case-hardened steel, the industry benchmark. Features a two channel grinding system for consistent results with every use.



Salt Mechanism

Made of corrosion proof durable ceramic, the mechanism is adjustable from coarse to remarkably powder fine. Yielding incredible output, this mechanism will revolutionize the salt mill category.

Munich - Red Lacquer Mill

Beech wood

Hang tag.

24 cm / 9 in

Pack of 6

SRP \$55.00 ea E-2750

SMP2401RD - Pepper

SMS2401RD - Salt

MADE IN



GERMANY



Munich - Chocolate Wood Mills

Beech wood

Hang tag.

30 cm / 12 in

Pack of 4

SRP \$60.00 ea E-3000

SMP3001CH - Pepper

Hang tag.

50 cm / 19.75 in

Pack of 4

SRP \$120.00 ea E-6000

SMP5001CH - Pepper

Hang tag.

80 cm / 31.5 in

Pack of 4

SRP \$250.00 ea E-12500

SMP8001CH - Pepper

MADE IN



GERMANY

Munich - Black Lacquer Mill

Beech wood

Hang tag.

30 cm / 12 in

Pack of 4

SRP \$65.00 ea E-3250

SMP3001BK - Pepper

MADE IN



GERMANY



30 cm/12 in



50 cm/19.75 in



80 cm/31.5 in

Culinary Collection

Tradition personified! Turned from quality European beech wood, these Mills suit any décor. Compare to the finest European brands and witness the unrivalled results; remarkable coarse to fine Pepper output and powdery fine salt that virtually dissolves into your culinary creations.

It's in the details!

Unique Control Adjustment Knob™, allows for precise grind adjustment without the worry of the knob coming loose on the coarsest setting.

EZfill™ ring for easy filling

Distinctive red mechanism casing makes a statement, identifying these mills as unmistakably Swissmar



Castell - Wood Mill with Walnut Stain Finish

EZfill™ ring makes filling a breeze!

European beech wood

Hang tag.

14 cm / 5.5 in

Pack of 6

SRP \$30.00 ea E-1500

SMP1401CWA - Pepper

SMS1401CWA - Salt

Hang tag.

22 cm / 8.5 in

Pack of 6

SRP \$40.00 ea E-2000

SMP2201CWA - Pepper

SMS2201CWA - Salt

Hang tag.

30 cm / 12 in

Pack of 6

SRP \$50.00 ea E-2500

SMP3001CWA - Pepper

Hang tag.

40 cm / 16 in

Pack of 4

SRP \$70.00 ea E-3500

SMP4001CWA - Pepper

Hang tag.

18 cm / 7 in

Pack of 6

SRP \$35.00 ea E-1750

SMP1801CWA - Pepper

SMS1801CWA - Salt

Hang tag.

26 cm / 10.25 in

Pack of 6

SRP \$45.00 ea E-2250

SMP2601CWA - Pepper

SMS2601CWA - Salt



14 cm/5.5"

18 cm/7"

22 cm/8.5"

26 cm/10.25"

30 cm/12"

40 cm/16"

Castell - Wood Mill with Natural Stain Finish

EZfill™ ring makes filling a breeze!

European beech wood

Hang tag.

14 cm / 5.5 in

Pack of 6

SRP \$30.00 ea E-1500

SMP1401CN - Pepper

SMS1401CN - Salt

Hang tag.

22 cm / 8.5 in

Pack of 6

SRP \$40.00 ea E-2000

SMP2201CN - Pepper

SMS2201CN - Salt

Hang tag.

30 cm / 12 in

Pack of 6

SRP \$50.00 ea E-2500

SMP3001CN - Pepper

Hang tag.

18 cm / 7 in

Pack of 6

SRP \$35.00 ea E-1750

SMP1801CN - Pepper

SMS1801CN - Salt

Hang tag.

26 cm / 10.25 in

Pack of 6

SRP \$45.00 ea E-2250

SMP2601CN - Pepper

SMS2601CN - Salt



14 cm/5.5"

18 cm/7"

22 cm/8.5"

26 cm/10.25"

30 cm/12"

Swissmar Mills can be easily merchandised on the NEW Modular Display Units. These displays are a great organizational tool to help customers easily identify Swissmar Mills on shelf and with the versatility to grow in 1 ft increments, these displays are sure to fit any retail environment. Depending on the size and style of mills selected, the 3ft display is suitable for up to 15 mill facings, merchandised 5 or 6 deep. Pictured here is a 3ft display of Culinary Castell Mills in Walnut and Natural finishes.



See page 31 for Mill Display ordering details

Classic Collection

Design, Function and Versatility is what you can expect from the Classic Mill collection.

Design: Embrace the simple curved lines of the Andrea, Alice and Belle Mills. Wonder at the sleek contemporary lines of the Torre Mills. This collection has a mill to suit every style.

Function: Move from coarse to fine with a simple turn of the adjustment knob.

Versatility: Ceramic multi-purpose mechanism suitable for pepper, salt and dry herbs.

Torre Mill

Distinctive design, with a hint of natural elegance is how to best describe this new Torre Mill. Genuine Italian olive wood, paired with crisp clear acrylic is sure to turn heads. Features a ceramic mechanism suitable for pepper, salt and dry herbs.



Ceramic multi-purpose mechanism

Versatile, fully adjustable ceramic mechanism suitable for pepper, salt and dry herbs.

The ceramic mechanism is harder than steel, odorless, rust & corrosion-proof.

Torre Mill

Acrylic - Olive Wood

Hang tag.

15 cm / 6 in

Pack of 6

SRP \$30.00 ea E-1500

SMP1502OL - Pepper

SMS1502OL - Salt



Torre Mill Set

Hang tag.

15 cm / 6 in

Pack of 3 sets

SRP \$60.00 ea E-3000

SM-1502OL



Torre Olive Wood Mill with Stainless Steel Top

Olive wood - Stainless steel

Hang tag.

15 cm / 6 in

Pack of 6

SRP \$50.00 ea E-2500

SMP1505ST - Pepper

SMS1505ST - Salt



Torre Olive Wood Mill with Stainless Steel Top

Olive wood - Stainless steel

Hang tag.

20 cm / 8 in

Pack of 6

SRP \$60.00 ea E-3000

SMP2005ST - Pepper

SMS2005ST - Salt



Torre Olive Wood Mill with Granite Top

Olive wood – Dark Granite

Hang tag.

15 cm / 6 in

Pack of 6

SRP \$55.00 ea E-2750

SMP1505DG – Pepper

SMS1505DG – Salt



Torre Natural Wood Mill

Contemporary designed mills add elegance and style to any table.

Beech wood

Hang tag.

15 cm / 6 in

Pack of 6

SRP \$25.00 ea E-1250

SMP1501NA – Pepper

SMS1501NA – Salt



Torre Natural Wood Mill

Contemporary designed mills add elegance and style to any table.

Beech wood

Hang tag.

20 cm / 8 in

Pack of 6

SRP \$30.00 ea E-1500

SMP2001NA – Pepper

SMS2001NA – Salt



Torre Chocolate Wood Mill

Contemporary designed mills add elegance and style to any table.

Beech wood

Hang tag.

15 cm / 6 in

Pack of 6

SRP \$25.00 ea E-1250

SMP1501CH – Pepper

SMS1501CH – Salt



Torre Chocolate Wood Mill

Contemporary designed mills add elegance and style to any table.

Beech wood

Hang tag.

20 cm / 8 in

Pack of 6

SRP \$30.00 ea E-1500

SMP2001CH – Pepper

SMS2001CH – Salt



Torre Black Matte Wood Mill with Stainless Steel Top

Beech wood – Stainless steel

Hang tag.
15 cm / 6 in

Pack of 6

SRP \$30.00 ea E-1500

SMP1501SS – Pepper

SMS1501SS – Salt



Torre Black Matte Wood Mill with Stainless Steel Top

Beech wood – Stainless steel

Hang tag.
20 cm / 8 in

Pack of 6

SRP \$35.00 ea E-1750

SMP2001SS – Pepper

SMS2001SS – Salt



Torre Black Matte Wood Mill with Dark Granite Top

Beech wood – Dark Granite

Hang tag.
15 cm / 6 in

Pack of 6

SRP \$35.00 ea E-1750

SMP1501DS – Pepper

SMS1501DS – Salt



Torre Mill Set

Black Matte – Dark Granite

Gift boxed.

15 cm / 6 in

Pack of 3 sets

SRP \$70.00 ea E-3500

SM-1501DS



Torre Acrylic Mill with Chocolate Wood Top

Acrylic – Beech wood

Hang tag.
15 cm / 6 in

Pack of 6

SRP \$22.00 ea E-1100

SMP1502CH – Pepper

SMS1502CH – Salt



Torre Mill Set

Acrylic – Beech wood

Gift boxed.

15 cm / 6 in

Pack of 3 sets

SRP \$44.00 ea E-2200

SM-1502CH



Torre Acrylic Mill with Stainless Steel Top

Acrylic – Stainless steel

Hang tag.

15 cm / 6 in

Pack of 6

SRP \$25.00 ea E-1250

SMP1502SS – Pepper

SMS1502SS – Salt



Torre Mill Set

Acrylic – Stainless Steel

Gift boxed.

15 cm / 6 in

Pack of 3 sets

SRP \$50.00 ea E-2500

SM-1502SS



Torre Brushed Stainless Steel Mill

Stainless steel

Hang tag.

15 cm / 6 in

Pack of 6

SRP \$30.00 ea E-1500

SMP1505SS – Pepper

SMS1505SS – Salt



Torre Mill Set

Stainless steel

Gift Boxed.

15 cm / 6 in

Pack of 3 sets

SRP \$60.00 ea E-3000

SM-1505SS



Torre Clear Acrylic Mill

Acrylic

Hang tag.

15 cm / 6 in

Pack of 6

SRP \$20.00 ea E-1000

SMP1502CL – Pepper

SMS1502CL – Salt



DID YOU KNOW...

Freshly ground pepper is more flavorful than pepper sold ground, enhancing the taste of any dish where pepper is used.



Andrea Mill

With their flirty curves, these Andrea clear acrylic Mills are available capped with tops in metallic finishes, classic chocolate stained wood or polished granite stone. Don't be shy, make a décor statement with your Mills.



Andrea Acrylic Mill with Chocolate Wood Top

Acrylic – Beech wood

Hang tag.

10 cm / 4 in

Pack of 6

SRP \$20.00 ea E-1000

SM302191 – Pepper

SM302207 – Salt

Hang tag.

15 cm / 6 in

Pack of 6

SRP \$25.00 ea E-1250

SM302214 – Pepper

SM302221 – Salt



Andrea Acrylic Mill with Stainless Steel Top

Acrylic – Stainless steel

Hang tag.

10 cm / 4 in

Pack of 6

SRP \$20.00 ea E-1000

SMP1002ST – Pepper

SMS1002ST – Salt

Hang tag.

15 cm / 6 in

Pack of 6

SRP \$25.00 ea E-1250

SMP1502ST – Pepper

SMS1502ST – Salt



Andrea Mill with Granite Top

Acrylic – Granite

Hang tag.

15 cm / 6 in

Pack of 6

SRP \$30.00 ea E-1500

SMP1502DG – Pepper

SMS1502WG – Salt



Andrea Mill with Granite Top Set

Acrylic – Granite

Gift boxed.

15 cm / 6 in

Pack of 3 sets

SRP \$60.00 ea E-3000

SM-1502DWG



Arctic White Marble Mill with Stainless Steel Top

Marble – Stainless steel

Hang tag.

15 cm / 6 in

Pack of 6

SRP \$45.00 ea E-2250

SMP1507ST – Pepper

SMS1507ST – Salt



Arctic White Marble Mill with Stainless Steel Top Set

Marble – Stainless steel

Gift boxed.

15 cm / 6 in

Pack of 3 sets

SRP \$90.00 ea E-4500

SM-1507ST



Alice Mill

Boasting the same curves as the Andrea Mills, clear, crisp acrylic is what you can expect from the Alice Mills. Available individually, in Sets and in a convenient CDU these Mills offer a simplistic versatility that truly suits every lifestyle.



Alice Acrylic Mill

Acrylic

Hang tag.

10 cm / 4 in

Pack of 6

SRP \$18.00 ea E-900

SM300180 - Pepper

SM300197 - Salt

Hang tag.

15 cm / 6 in

Pack of 6

SRP \$20.00 ea E-1000

SM300203 - Pepper

SM300210 - Salt



Alice You & Me Mill Set

Acrylic

Gift boxed.

15 cm / 6 in

Pack of 3 sets

SRP \$40.00 ea E-2000

SM301989



Alice You & Me Mill Set with Tray

Acrylic

Acetate box.

10 cm / 4 in

Pack of 3 sets

SRP \$40.00 ea E-2000

SM305772



Alice 12 Pc Mill CDU

10 cm / 4 in

8 pepper, 4 salt mills

24 x 17.8 x 17.8 cm / 9 x 7 x 7 in

Prepack of 12

SRP \$18.00 ea E-900

SM304973



Alice 12 Pc Mill CDU

15 cm / 6 in

8 pepper, 4 salt mills

24 x 17.8 x 17.8 cm / 9 x 7 x 7 in

Prepack of 12

SRP \$20.00 ea E-1000

SM304980



Belle Mill

Belle Mills feature olive and beech woods contoured to fit in the hand for a comfortable grind. With matching wood tops, or tops in accent brushed stainless steel, Belle Mills range in design from classically modern, to classically exotic.



Belle Olive Wood Mill with Stainless Steel Top

Olive wood – Stainless steel

Hang tag.

20 cm / 8 in

Pack of 6

SRP \$60.00 ea E-3000

SMP2006ST – Pepper

SMS2006ST – Salt



Belle Olive Wood Mill with Stainless Steel Top

Olive wood – Stainless steel

Hang tag.

15 cm / 6 in

Pack of 6

SRP \$50.00 ea E-2500

SMP1506ST – Pepper

SMS1506ST – Salt



Belle Mill Set

Olive Wood – Stainless steel

Gift boxed.

15 cm / 6 in

Pack of 3 sets

SRP \$100.00 ea E-5000

SM-1506ST



Belle Black Matte Wood Mill with Stainless Steel Top

Beech wood – Stainless steel

Hang tag.
15 cm / 6 in
Pack of 6

SRP \$28.00 ea E-1400

SMP1501MB – Pepper

SMS1501MB – Salt



Belle Black Matte Wood Mill with Stainless Steel Top

Beech wood – Stainless steel

Hang tag.
20 cm / 8 in
Pack of 6

SRP \$33.00 ea E-1650

SMP2001MB – Pepper

SMS2001MB – Salt



Belle Natural Wood Mill

Beech wood

Hang tag.
15 cm / 6 in
Pack of 6

SRP \$25.00 ea E-1250

SM300029 – Pepper

SM300036 – Salt



Belle Natural Wood Mill

Beech wood

Hang tag.
20 cm / 8 in
Pack of 6

SRP \$30.00 ea E-1500

SM300043 – Pepper

SM300050 – Salt



Belle Chocolate Wood Mill

Beech wood

Hang tag.
15 cm / 6 in
Pack of 6

SRP \$25.00 ea E-1250

SM300081 – Pepper

SM300098 – Salt



Belle Chocolate Wood Mill

Beech wood

Hang tag.
20 cm / 8 in
Pack of 6

SRP \$30.00 ea E-1500

SM300104 – Pepper

SM300111 – Salt



Nutmeg Mill

Hang tag.
10 cm / 4 in
Pack of 6

Matte Black
SRP \$20.00 ea E-1000
SM301705



Wooden Mill Tray

European beech wood with chrome handle
Perfect for mills up to
17.75 cm / 7 in tall and
6 dia. cm / 2.4 dia. in

Gift boxed.
20.3 cm / 8 in
Pack of 6
SRP \$17.00 ea E-850
SMT1401CH



Fun Fact:

Often associated with Fall and freshly baked pumpkin pie, nutmeg delivers a nutty, warm, and slightly sweet taste. It's reminiscent of clove and tobacco and can even have subtle citrusy notes, making it the perfect addition to comforting sweet and savory dishes.

Salt, Pepper and Spice Funnel

Carded.
6 dia. cm / 2.25 dia. in
Pack of 12
SRP \$7.00 ea E-350
ST4300



Mill Tray

Acrylic with chrome handle
Fits two 4" or 6" mills

Gift boxed.
15 cm / 6 in
Pack of 6
SRP \$10.00 ea E-500
SM304874





Why choose a Salt Keeper?

Our beautiful genuine Italian olive wood salt keepers certainly add a decorative touch to kitchen counters, but perhaps more importantly they ensure salt is accessible while cooking. There is no need to fiddle with a salt mill or shaker in the midst of the culinary process, simply open the lid and reach for a pinch. To prevent moisture from dampening the salt, be sure the lid is used.



Palermo Olive Wood Salt Keeper

Dual compartment with magnetic swivel lid

Gift boxed.

4.4 oz. capacity each side

12.5 x 6.5 cm / 5 x 2.5 in

Pack of 6

SRP \$55.00 ea E-2750

OLBX02



Napoli Olive Wood Salt Keeper

Removable lid

Gift boxed.

2.2 oz. capacity

7 x 5.5 cm / 2.7 x 2 in

Pack of 6

SRP \$25.00 ea E-1250

OLBX03



Siena Olive Wood Salt Keeper

Compact compartment with magnetic swivel lid

Gift boxed.

4.2 oz. capacity

9.5 x 6 cm / 3.7 x 2.3 in

Pack of 6

SRP \$40.00 ea E-2000

OLBX04



Swissmar Y-Handle Peelers

This next generation Y-peeler features a dynamic and ergonomically designed handle for easy peeling. Handle fits comfortably in the hand to help reduce fatigue when peeling. Integrated side cutter removes potato eyes and blemishes.

Available with 4 blades:

Classic Scalpel – for hard fruits and vegetables

Serrated – for delicate fruits and vegetables

Julienne – for thin julienne match-sticks

SwissCurve® – for hard fruits and vegetables



Y-Peeler – Scalpel Blade

Thinly peels hard fruits and vegetables like potatoes, carrots, apples, and more. Also great for hard cheeses.

Carded.

14 x 7 x 2.5 cm /
5.5 x 2.76 x 0.98 in

Prepack of 12

SRP \$6.00 ea E-300

00633GN - Green

00633RD - Red

00633OR - Orange

00633YL - Yellow

00633BL - Blue

00633BK - Black

00633WH - White

+ 00633RDC - Red with cross

+ 00633WHC - White with cross

*Bulk option available



Y-Peeler - Julienne Blade

Creates thin julienne sticks with one simple stroke on carrots, zucchini, cucumbers, and more. Also great for hard cheeses.

Carded.

14cm x 7cm x 2.5cm /
5.5 x 2.76 x 0.98 in

Prepack of 12

SRP \$8.00 ea E-400

00635OR



Y-Peeler – Serrated Blade

Thinly peels delicate fruits and vegetables like tomatoes, kiwis, mangoes, and more. Also great for hard cheeses.

Carded.

14 x 7 x 2.5 cm /
5.5 x 2.76 x 0.98 in

Prepack of 12

SRP \$7.00 ea E-350

00634RD



Y-Peeler – SwissCurve™ Blade

Innovative patented PeelAway™ blade design removes peels by directing them away from what you are peeling. Thinly peels hard fruits and vegetables like potatoes, carrots, apples, and more. Carded.

14cm x 7cm x 2.5cm / 5.5 x 2.76 x 0.98 in

Prepack of 12

SRP \$10.00 ea E-500

00636YL



Y-Peeler – Scalpel Blade CDU

Scalpel Blade only.
In display. 24 pieces.
Assorted color prepack.

With protective covers.
24.3 x 23.2 x 31.1 cm /
9.6 x 9.1 x 12.2 in
Prepack of 24
SRP \$6.00 ea E-300
00633CDU2



Y-Peeler – Scalpel Blade CDU

Scalpel Blade only. In display. 24 pieces.
12 Red with cross, 12 White with cross.

With protective covers.
24.3 x 23.2 x 31.1 cm /
9.6 x 9.1 x 12.2 in
Prepack of 24
SRP \$6.00 ea E-300
00633CDU3



Y-Peeler – Scalpel Blade CDU

Scalpel blade only. In display. 24 pieces.
Assorted color prepack.

With protective covers.
24.3 x 23.2 x 31.1 cm /
9.6 x 9.1 x 12.2 in
Prepack of 24
SRP \$6.00 ea E-300
00633CDU



Swissmar Straight Handle Peelers

In our quest to become the peeler of choice, we are pleased to offer yet another peeler option – Swiss Made, straight handle peelers. Ergonomically designed and made of durable and light-weight material, this handle is truly unique. For improved grip and comfort, we added a soft rubber accent and to complete the functionality, we also added a stainless steel blemish remover tip to get rid of imperfections from any vegetables with ease.

Designed by Swissmar, manufactured with Swiss precision.



SwissCurve™ Straight Peeler

The curved design of the patented blade removes peels by directing them away from what you are peeling, while the non-slip ergonomically designed handle fits comfortably in your hand.

Carded
10.8 x 21 cm / 4.25 x 8.25 in
Pack of 12

SRP \$12.00 ea E-600

00465BG – Black with green
00465BO – Black with orange





Swiss Double Edge™ Straight Peeler

Thinly peels hard fruits and vegetables like potatoes, carrots, apples, and more.

Carded
10.8 x 21 cm / 4.25 x 8.25 in
Pack of 12

SRP \$12.00 ea E-600

- 00466BG - Black with green
- 00466BO - Black with orange
- 00466BR - Black with red



*Bulk option available
00466BRB

Swiss Julienne Straight Peeler

The sharp stainless steel blade with julienne teeth and ergonomic curved handle makes it easy to add perfectly thin strips of vegetables to any dish.

Carded
10.8 x 21 cm / 4.25 x 8.25 in
Pack of 12

SRP \$12.00 ea E-600
00467BO



Straight Peeler Duo

Set includes:

Red – Double Edge Blade
Orange – Julienne Blade
21 x 11.5 x 2.4 cm /
8.26 x 4.52 x 0.94 in
Pack of 12

SRP \$20.00 ea E-1000
00468



SwissCurve™ Straight Peelers – CDU

4 orange, 4 green, 4 red
18 x 14.5 x 18.5 cm /
7.1 x 5.7 x 7.3 in
Prepack of 12

SRP \$12.00 ea E-600
00465CDU



Swiss Double Edge™ Straight Peelers – CDU

4 orange, 4 green, 4 red
18 x 14.5 x 18.5 cm /
7.1 x 5.7 x 7.3 in
Prepack of 12

SRP \$12.00 ea E-600
00466CDU



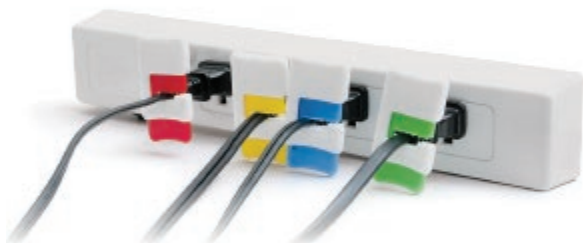
Snappy Seal 100 Pc CDU

Display of 100 pieces.
Assorted colors.

17.8 x 20.3 x 24.9 cm /
7 x 8 x 9.8 in

Prepack of 100

SRP \$2.00 ea E-100
00781



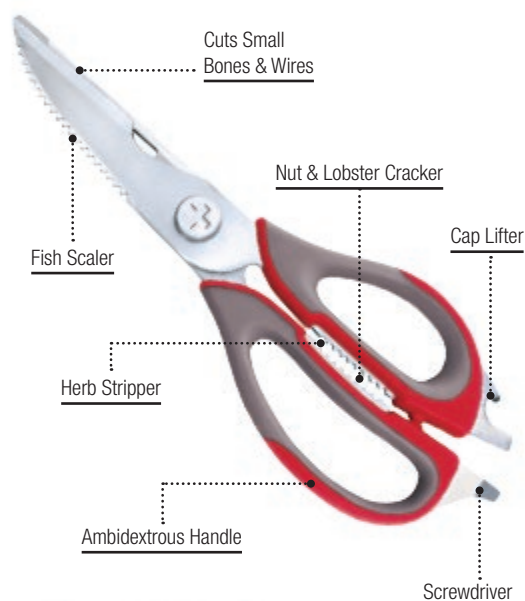
Kitchen Scissors

Carded.

23 cm / 9 in

Pack of 6

SRP \$15.00 ea E-750
D1175



B - 7 mm & 3.5 mm inserts
(julienne or shred cuts)



C - Multi-function bowl with lid



A - V-Slicer Plus Body
(Shown here with thick/thin insert)



D - Safety Holder

Swissmar V-Prep™ Mandoline Slicer

Safely and easily switch the inserts to achieve the perfect slice,
julienne, shred or cube cut every time!

Set includes:

A - Mandoline Slicer with 1 thick/thin slicing insert

B - 2 blade inserts - 7 mm & 3.5 mm

C - Multi-function bowl with lid

D - Safety holder

Easy to use instruction manual

Gift boxed.

8.6 x 8.6 x 5.1 cm /

3.375 x 3.375 x 2 in

Pack of 6

SRP \$60.00 ea E-3000
V-5000

Shucker Paddy

OYSTER GEAR

A collection of products designed exclusively in collaboration with Patrick McMurray BPHE, World Champion oyster shucker and Guinness Record Holder for 39 oysters opened in one minute.

The Shucker Paddy Original Oyster Knife is the result of three years experimentation and 50 prototypes. The knife's handle fits the palm like a pistol; a 3 inch notched stainless-steel blade is where the pistol's barrel would be, with sharpened edges top and bottom. Traditional oyster knives have only one axis, running straight down the blade, but the Shucker Paddy has two - one down the blade, the other down the angled pistol grip. That dual axis gives the knife a lot more leverage and less force required. The result, an Oyster Knife that will let you, Professional or at home, "Shuck with Ease".



SHUCKER PADDY OYSTER GEAR



Unique Design

The unique ergo-dynamic Dual Axis Pistol Grip design keeps the forearm in alignment with the blade for maximum transfer of power. Dual axis lever = less force to open oysters.



Safety

Integrated finger guard and non-slip handle offers superior protection when shucking. Light weight high-impact injection moulded non-slip PP handle provides highest in sanitary qualification.



Versatility

Ambidextrous – Suitable for left or right handed.

Shucker Paddy Original Oyster Knife

Formerly Universal Oyster Knife

Gift boxed.
20 x 7.5 x 3 cm / 8 x 3 x 1.25 in
Pack of 12
SRP \$20.00 ea E-1000
SK2013BK – Black
SK2013YL – Yellow



Shucker Paddy Malpeque Oyster Knife

The Malpeque oyster is among the preferred oysters sought after by oyster lovers all around the world. They are considered by many to be "The best in the World"

Gift boxed.
20 x 7.5 x 3 cm / 8 x 3 x 1.25 in
Pack of 12
SRP \$20.00 ea E-1000
SK2018BK – Black
SK2018YL – Yellow



Shucker Paddy 4-in-1 Shucking Tool

The 4-in1 Shucking Tool is a multi-purpose tool designed for all oyster lovers from professional shuckers to aspiring enthusiasts. Made of high quality durable stainless steel. Ergonomic design suitable for right or left hand use.

Carded
10.8 x 21 cm / 4.25 x 8.25 in
Pack of 12
SRP \$15.00 ea E-750
SK2018MP

4-in-1



Shucker Paddy Ceramic Sauce Dish

Gift boxed.
5 x 11 dia. cm / 2 x 4.3 dia. in
Pack of 12
SRP \$8.00 ea E-400
SK2013D



Shucker Paddy Wooden Puck

Gift boxed.
2.5 x 7.5 dia. cm / 1 x 3 dia. in
Pack of 12
SRP \$7.00 ea E-350
SK2013P



Shucker Paddy Oyster Tray Set

Shucking set; the puck provides the ideal shucking surface, the tray collects juice and shells as you shuck

Serving set; serve up freshly shucked oysters on a bed of ice

Baking set; stainless steel tray is oven-safe, perfect for baked Oysters Rockefeller or nachos

Includes: Stainless steel oyster tray and wooden puck

Gift boxed.
32 x 32 x 8 cm / 12 x 12 x 3.4 in
Pack of 5 sets
SRP \$40.00 ea E-2000
SK2013TP



New



Shucker Paddy Oyster Tray – Bulk Pack

Bulk Pack of 4
SRP \$130.00 ea E-6500
SK2013TB

How to Shuck with Shucker Paddy:



Place Oyster cup-side down, exposing on the hinge. Hold the Oyster firmly so it does not move.



Insert the tip of the knife into the hinge of the oyster, with a slight twisting motion (like turning a key) - until the knife sets 1/4" into the hinge. Once the knife is set, a light 1/4 turn of the handle, will pop the hinge.



Pry the top shell up, and scrape the top adductor muscle - 2/3 of the way up from the hinge, on the right of the middle of the oyster - to release the top shell.



Locate the lower adductor muscle. Insert blade of knife under this muscle, and scrape loose from bottom shell.



MADE IN
GERMANY

Change your life!



simple

Delicious food does not need to be extraordinary. Usually it's the simple things in life that give you the greatest joy – and this is also the philosophy of Börner, whose products are intended to make customers enjoy simple dishes. With the help of these practical products, it is finally easy to prepare good and delicious food.



quick

Time is a limited commodity and often we just don't have the time to prepare a decent meal. However, with the help of Börner products, a good meal can be prepared in a very short time. These are the right tools to create not only delicious, but also quick meals, so you have more time to enjoy life.



healthy

Not only should food be simple and quick, but health also plays an important role. Raw food is an essential part of our diet and thanks to Börner, it is not difficult to create healthy food. Börner is here to ignite your appetite for cooking and make it easy to prepare deliciously healthy options!



V-Slicer Plus Mandoline

Safely and easily switch the inserts to achieve the perfect slice, julienne, shred or cube cut every time! Unit rests easily in palm of hand when in use. Safety Holder – for easy, fast and safe cutting.

Set includes:

- A - Mandoline Slicer
- A - 1 thick/thin slicing insert
- B - 2 blade inserts
- C - Storage caddy with safety clip
- D - Safety holder

Easy to use instruction manual

Gift boxed.

8.6 x 8.6 x 5.1 cm / 3.375 x 3.375 x 2 in

Pack of 6

SRP \$60.00 ea E-3000

V-1001

MADE IN
GERMANY





Change your life!

VPower V-Slicer Mandoline

Slice. Dice. Done.

The ultimate mandoline, the innovative VPower V-Slicer. Adjust your thickness or cutting size without removing the insert. Constructed from durable ABS plastic with German surgical grade stainless steel blades. Use the slicing plane insert, 7mm or 3.5mm blade inserts to achieve up to 10 different cuts - julienne, slice, shred - even cube! Börner's patented safety setting provides worry free storage that is both convenient and compact. With four fresh colors available, the strength is in the design, the power to create healthy meals is yours!

Gift boxed.

37.5 x 15 x 8.5 cm /

14.75 x 5.9 x 3.25 in

Pack of 6

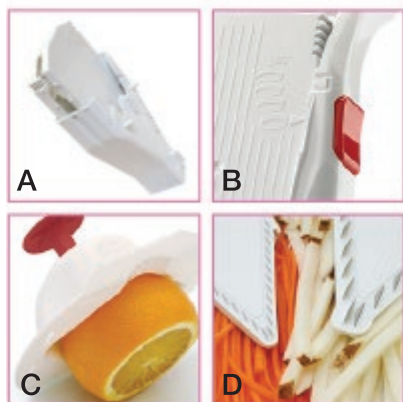
SRP \$65.00 ea E-3250

V-7000WH - White

V-7000OR - Orange

V-7000RD - Red

V-7000GN - Green



A - Blade Holder & Drying Stand

B - Patented Push Button

C - Safety Holder



D - 7 mm & 3.5 mm inserts
(julienne, shred or cube cuts)

Key Features:

V-blade is crafted from surgical grade stainless steel.

Patented push button thickness setting

Safety Holder with stainless steel prongs to hold food securely

Safety setting to shield blade for safe storage

Disc Slicer

- German surgical-grade stainless steel blade
 - Durable ABS plastic frame
 - Unit rests easily in palm of hand when in use
 - Ridge on base allows secure placement on Börner bowl
 - Consistent slice thickness
 - Disc slices made fast and safe
 - Easy to clean
- (Safety Holder sold separately).

Gift boxed.

34.2 x 12.7 x 3.8 cm /

13.5 x 5 x 1.5 in

Pack of 1

SRP \$20.00 ea E-1000

V-2009

MADE IN

GERMANY



PowerLine Wave Waffle Cutter with Adjustable Safety Insert

Offspring of the VPower Mandoline that offers; Easy "click" system for changing the position of the insert. Safety position locks insert and shields the wave blade. Side rails for using the original Börner Safety Holder for easy, fast and safe cutting (Safety Holder sold separately).

Gift boxed.

34.2 x 12.7 x 3.8 cm /

13.5 x 5 x 1.5 in

Pack of 1

SRP \$22.00 ea E-1100

V-2052

MADE IN

GERMANY



PowerLine Thin Julienne Slicer

Offspring of the VPower Mandoline. Extended handle promotes full range usage of the platform's cutting surface. Side rails for using the original Börner Safety Holder for easy, fast and safe cutting (Safety Holder sold separately).

Gift boxed.

33.13 x 12.5 x 3.13 cm /

13.25 x 5 x 1.25 in

Pack of 1

SRP \$22.00 ea E-1100

V-2053

MADE IN

GERMANY



Oval Slicing Bowl

Specially developed to use with all of Börner's original slicers. Attach the edges of any slicer to either side of the bowl for a perfect and secure fit.

38.5 x 23 x 10 cm / 15.25 x 9 x 4 in

Pack of 1

SRP \$15.00 ea E-750

V-4020



Food Safety Holder

Always use the safety holder.

Your fingers are completely guarded when using the safety holder. Metal prongs pierce the food with a secure hold, allowing you to glide it along the blade with very little pressure.

15 x 12.5 x 5 cm / 6 x 5 x 2 in

Pack of 1

SRP \$9.00 ea E-450

V-2008



Veg' Art Prep Tool

In addition to peeling vegetables and fruits, this **6 in 1** prep tool can assist in preparing creative flowered garnishes. The multi-peeler blade is made of the finest German surgical grade stainless steel.

Carded.

15cm x 6.5 cm / 6 x 2.75 in

Pack of 1

SRP \$14.00 ea E-700

V-2007



Multi-Peeler Set

Y-Peeler and Straight Peeler with the convenience of a detachable handle. Y-Peeler equipped julienne blade for match stick julienne slices, also features a groove cutter, V-knife and peel cutter for slicing citrus peels with ease. Straight Peeler equipped with scalpel blade is perfect for hard fruits and vegetables, also features a potato blemish remover and peel cutter for slicing citrus peels. Available in green with grey handle and white with grey handle.

Carded.

Straight peeler: 17 x 4 x 2 cm / 6.5 x 1.625 x 0.75 in

Y Peeler : 15.5 x 6.75 x 2.5 cm / 6 x 2.625 x 1 in

Pack of 6

SRP \$20.00 ea E-1000

V-2017GN - Green/Grey

V-2017WH - White/Grey



Julienne Blade Insert



Julienne blade



Groove cutter



V-knife



Citrus opener



Scalpel Blade Insert



Scalpel blade



Potato eye remover



Citrus opener



For left or right hand use



Cocktail Strainer

Brushed/polished stainless steel

Gift boxed.

18.5 x 8.5 x 2.5 cm /

7.25 x 3.25 x 1 in

Pack of 12

SRP \$18.00 ea E-900

ST4249



Cocktail Shaker

Brushed / polished
stainless steel

750 ml / 25.4 oz. capacity

Gift boxed.

5.5 dia. x 24 cm / 2.1 dia. x 9.5 in

Pack of 12

SRP \$33.00 ea E-1650

ST4291



7 Pc Bar Set

Brushed/polished stainless steel

Set includes: Shaker, Double jigger, Strainer, Bar knife, Stirrer, Tongs, Stand

Gift boxed.

28.75 x 18.45 x 18.45 cm / 11.25 x 7.38 x 7.38 in

Pack of 1

SRP \$80.00 ea E-4000

ST4442



Glass Rimmer – with Garnish Tongs

Brushed/polished stainless steel

Gift boxed.

14 x 14 x 1.9 cm / 5.5 x 5.5 x 0.75 in

Pack of 6

SRP \$24.00 ea E-1200

ST4214



Wooden Muddler

Beech wood

Hang tag.

3.5 dia. x 25 cm / 1.4 dia. x 9.8 in

Pack of 6

SRP \$15.00 ea E-750

00316



Cocktail Spoon – with Hammer

Polished stainless steel

Gift boxed.

26.5 x 3 x 2.5 cm /

10.5 x 1.25 x 0.9 in

Pack of 12

SRP \$13.00 ea E-650

ST3806



Double Jigger

Polished stainless steel

30 ml & 45 ml

1 oz. & 1.5 oz.

Gift boxed.

4.5 dia. x 10 cm /

1.75 dia. x 4 in

Pack of 12

SRP \$10.00 ea E-500

ST2984



Wine Coaster

Brushed/polished stainless steel

Gift boxed.

12 dia. x 5 cm / 4.75 dia. x 2 in

Pack of 6

SRP \$15.00 ea E-750

ST4410



1-Step Waiters Corkscrew

Highly professional and functional 1-Step waiters corkscrew is suitable for use with natural cork and artificial stoppers. Easy pull foil cutter with serrated blade.

Gift boxed.

13 cm / 5.0 in

Pack of 6

SRP \$20.00 ea E-1000

F5575



1-Step Waiters Corkscrew

Highly professional and functional 1-Step waiters corkscrew is suitable for use with natural cork and artificial stoppers. Easy pull foil cutter with serrated blade.

Gift boxed.

13 cm / 5.0 in

Pack of 6

SRP \$20.00 ea E-1000

F5580



2-Step Waiters Corkscrew

Highly professional and functional 2-Step waiters corkscrew is suitable for use with natural cork and artificial stoppers. 2-step head for easy cork removal. Handle accented with black pakka wood.

Gift boxed.

13 cm / 5.0 in

Pack of 6

SRP \$22.00 ea E-1100

F5555



2-Step Waiters Corkscrew CDU

Pakka Wood Handle Accent

14.4 x 9.89 x 5.5 cm / 5.6 x 3.89 x 2.16 in

Prepack of 9

SRP \$22.00 ea E-1100

F5555CDU



Convenient
CDU merchandising

2-Step Waiters Corkscrew

Highly professional and functional 2-Step waiters corkscrew is suitable for use with natural cork and artificial stoppers. Easy pull foil cutter with serrated blade. Handle accented with black pakka wood.

Gift boxed.

12 cm / 4.7 in

Pack of 6

SRP \$20.00 ea E-1000

F5560



2-Step Waiters Corkscrew CDU

Pakka Wood Handle Accent

14.4 x 9.89 x 5.5 cm / 5.6 x 3.89 x 2.16 in

Prepack of 9

SRP \$20.00 ea E-1000

F5560CDU



Convenient
CDU merchandising

1-Step Waiters Corkscrew

Highly professional and functional waiters corkscrew is suitable for use with natural cork and artificial stoppers. Integrated foil cutter with serrated blade. Handle accented with cork.

Gift boxed.

13.5 cm / 5.3 in

Pack of 6

SRP \$25.00 ea E-1250

F5570



Waiters Corkscrew CDU

Natural Cork Handle Accent

14.4 x 9.89 x 5.5 cm / 5.6 x 3.89 x 2.16 in

Prepack of 9

SRP \$25.00 ea E-1250

F5570CDU



Convenient
CDU merchandising

2-Step Waiters Corkscrew

Highly professional and functional 2-Step waiters corkscrew is suitable for use with natural cork and artificial stoppers. 2-step head for easy cork removal. Integrated foil cutter and screw top opener. Handle accented with black pakka wood.

Gift boxed.

12.6 cm / 5.0 in

Pack of 6

SRP \$45.00 ea E-2250

F5565



Crumb Sweeper

Easily sweep away crumbs from tables and counter tops. Handle accented with black pakka wood.

Gift boxed.

16 cm / 6.0 in

Pack of 6

SRP \$12.00 ea E-600

00404



Got left over wine? Preserve it with the Epivac vacuum pump!

This clever tool removes air from the bottle, preventing further fermentation and preserves your wine for days.



Preserving Wine

Remove air from the bottle, preventing further fermentation and preserve your wine for days.

1. Push pump valve to wine position (Dual function pumps only)
2. Securely place and completely insert wine stopper in bottle
3. Hold pump gently in stopper and with other hand, pump 10-15 times (stop pumping when firm resistance is felt)
4. Remove pump only and store bottle in an upright position
5. To release stopper, tilt valve stem inside stopper. Remove stopper from bottle and serve



Preserving Champagne

Pump air into the bottle, preventing the dissipation of the bubbles and preserve your champagne for days.

1. Pull pump valve to champagne position (Dual function pumps only)
2. Unscrew stopper from sleeve. Slide sleeve over neck of champagne bottle. Screw stopper into sleeve. Do not overtighten
3. Hold pump gently in stopper and with other hand, pump 10-15 times (stop pumping when firm resistance is felt)
4. Remove pump only and store bottle in an upright position
5. To release stopper, unscrew slowly.



Epivac Wine Saver Vacuum Pump

Gift boxed.

4 x 9 x 14 cm / 1.5 x 3.5 x 5.5 in

Pack of 6

SRP \$15.00 ea E-750

71007 - Grape

71009 - Black and burgundy

71010 - Black



Epivac Dual Function Wine & Champagne Pump Set

Set includes:

Dual function pump, 2 wine stoppers,
1 champagne stopper, Clear storage case

Gift boxed.

15 x 9 x 15 cm / 6 x 3.5 x 6 in

Pack of 6

SRP \$25.00 ea E-1250

70001 - Polished Chrome

70002 - Black



Wine Stoppers – 4 pack

Black.

Gift boxed.

Pack of 12 sets

SRP \$8.00 ea E-400

72002



Wine Stoppers – Bulk

Bulk pack of 12

Polybag.

Pack of 24 bags

SRP \$18.00 ea E-900

IE-114



Champagne Stopper

Gift boxed.

15 dia. x 9 cm / 6 dia. x 3.5 in

Pack of 24

SRP \$8.00 ea E-400

72020



Wine Chiller Sleeve

Black

Fits wine and
champagne bottles

Gift boxed.

12.7 dia. x 18.4 x 2.5 cm /

5 dia. x 7.25 x 1 in

Pack of 12

SRP \$13.00 ea E-650

73000



Kitchen Gadget CDU's

*We make
merchandising easy...*

Y-Peeler – Scalpel Blade CDU

Scalpel Blade only. In display. 24 pieces.
Assorted color prepack.

With protective covers.
24.3 x 23.2 x 31.1 cm /
9.6 x 9.1 x 12.2 in
Prepack of 24

SRP \$6.00 ea E-300
00633CDU2



Y-Peeler – Scalpel Blade CDU

Scalpel blade only. In display. 24 pieces.
Assorted color prepack.

With protective covers.
24.3 x 23.2 x 31.1 cm / 9.6 x 9.1 x 12.2 in
Prepack of 24

SRP \$6.00 ea E-300
00633CDU



Y-Peeler – Scalpel Blade CDU

Scalpel Blade only. In display. 24 pieces.
12 Red with cross, 12 White with cross.

With protective covers.
24.3 x 23.2 x 31.1 cm /
9.6 x 9.1 x 12.2 in
Prepack of 24

SRP \$6.00 ea E-300
00633CDU3



SwissCurve™ Straight Peelers – CDU

4 orange, 4 green, 4 red
18 x 14.5 x 18.5 cm / 7.1 x 5.7 x 7.3 in
Prepack of 12

SRP \$12.00 ea E-600
00465CDU



Swiss Double Edge™ Straight Peelers – CDU

4 orange, 4 green, 4 red
18 x 14.5 x 18.5 cm / 7.1 x 5.7 x 7.3 in
Prepack of 12

SRP \$12.00 ea E-600
00466CDU



Stainless Steel Cheese Knife Prepack with Double-sided Display

Top selling stainless steel cheese knives in one compact display

Contains:

- 6 Cheese Plane - SK8037SS
- 6 Cheese Cleaver - SK8036SS
- 6 Cheese Spreader - SK8035SS
- 6 Hard Rind Cheese Knife - SK8039SS
- 6 Soft Cheese Knife - SK8034SS
- 6 Universal Cheese Knife - SK8018SS

45.3 x 33 x 30 cm /
17.8 x 13 x 11.8 in

Pack of 1

SRP \$720.00 ea E-36000
SCH-PACK2

Empty Display
SCK-DISP2



Stainless Steel Cheese Knife Prepack with Single-sided Display

Top selling stainless steel cheese knives in one compact display

Contains:

- 6 Cheese Spreader - SK8035SS
- 6 Hard Rind Cheese Knife - SK8039SS
- 6 Universal Cheese Knife - SK8018SS

45.3 x 33 x 15 cm / 17.8 x 13 x 5.9 in
Pack of 1

SRP \$360.00 ea E-18000
SCH-PACK3

Empty Display
SCK-DISP3



Stainless Steel Cheese Knife Prepack with Display

Top selling stainless steel cheese knives in one compact display

Contains:

- 6 Cheese Plane - SK8037SS
- 6 Cheese Cleaver - SK8036SS
- 6 Cheese Spreader - SK8035SS
- 6 Hard Rind Cheese Knife - SK8039SS
- 6 Soft Cheese Knife - SK8034SS
- 6 Universal Cheese Knife - SK8018SS
- 1 Wire Display

27.5 x 40 x 35 cm /
0.75 x 15.75 x 13.75 in
Pack of 1

SRP \$720.00 ea E-36000
SCH-PACK



Alice 12 Pc Mill CDU

10 cm / 4 in

8 pepper, 4 salt mills

24 x 17.8 x 17.8 cm / 9 x 7 x 7 in

Prepack of 12

SRP \$18.00 ea E-900
SM304973



Alice 12 Pc Mill CDU

15 cm / 6 in

8 pepper, 4 salt mills

24 x 17.8 x 17.8 cm / 9 x 7 x 7 in

Prepack of 12

SRP \$20.00 ea E-1000
SM304980



Snappy Seal 100 Pc CDU

Display of 100 pieces. Assorted colors.

17.8 x 20.3 x 24.9 cm / 7 x 8 x 9.8 in

Prepack of 100

SRP \$2.00 ea E-100
00781



Terms and Conditions

PRICING	See price list.
F.O.B.	Niagara Falls, NY Warehouse
FREIGHT	Free freight for orders over \$1500 net. (except Hawaii and Alaska) Additional exceptions may apply, check with your Swissmar sales representative for details.
TERMS	Net 30 days (10 days 2% for cash or check payment only) on approved credit. No C.O.D.'s. First order is required to be prepaid. VISA and MASTERCARD accepted, with a 3% service charge. Electronic payment, or direct deposit, as arranged with Credit Dept.
MINIMUM ORDER	\$500 net first order - \$300 net re-order. Orders below the minimum will NOT be shipped.
BACKORDERS	Backorders below \$300 will automatically be cancelled and must be re-written. Backorders exceeding \$300 will be shipped with free freight as soon as the merchandise is received by Swissmar, unless you are notified otherwise.
RETURNS	A Return Authorization number is required for any return made to Swissmar. Unauthorized returns will be refused at our dock and freight charges will remain the responsibility of the account shipping the merchandise. Swissmar will determine if credit is due only after inspecting the returned merchandise. All returns are to be sent to the warehouse address below. A restocking charge of 15% will apply to all returns accepted for credit where Swissmar Inc. is not at fault.
CLAIMS	All claims for DAMAGES, OVERAGES, SHORTAGES, or DEFECTIVE MERCHANDISE must be made within 5 days of receipt of shipment. Original shipping cartons must be retained for any claim. All DAMAGES and SHORTAGES must be filed with carrier within 5 days as well.
PAST DUE POLICY	Swissmar reserves the right not to ship new orders until all past due invoices are paid. Continued late payments will result in a review of the account and probable change of terms status for that account.
PRICES ARE SUBJECT TO CHANGE WITHOUT NOTICE	

For all your entertaining needs



CANADA

Swissmar Ltd.
6 - 35 East Beaver Creek Rd.
Richmond Hill, ON L4B 1B3

USA

Swissmar Inc.
6391 Walmore Rd.
Niagara Falls, N.Y. 14304

T: 905-764-1121
F: 905-764-1123
Toll Free: 1-877-947-7627
Toll Free Fax: 1-800-216-3492

E: info@swissmar.com
www.swissmar.com